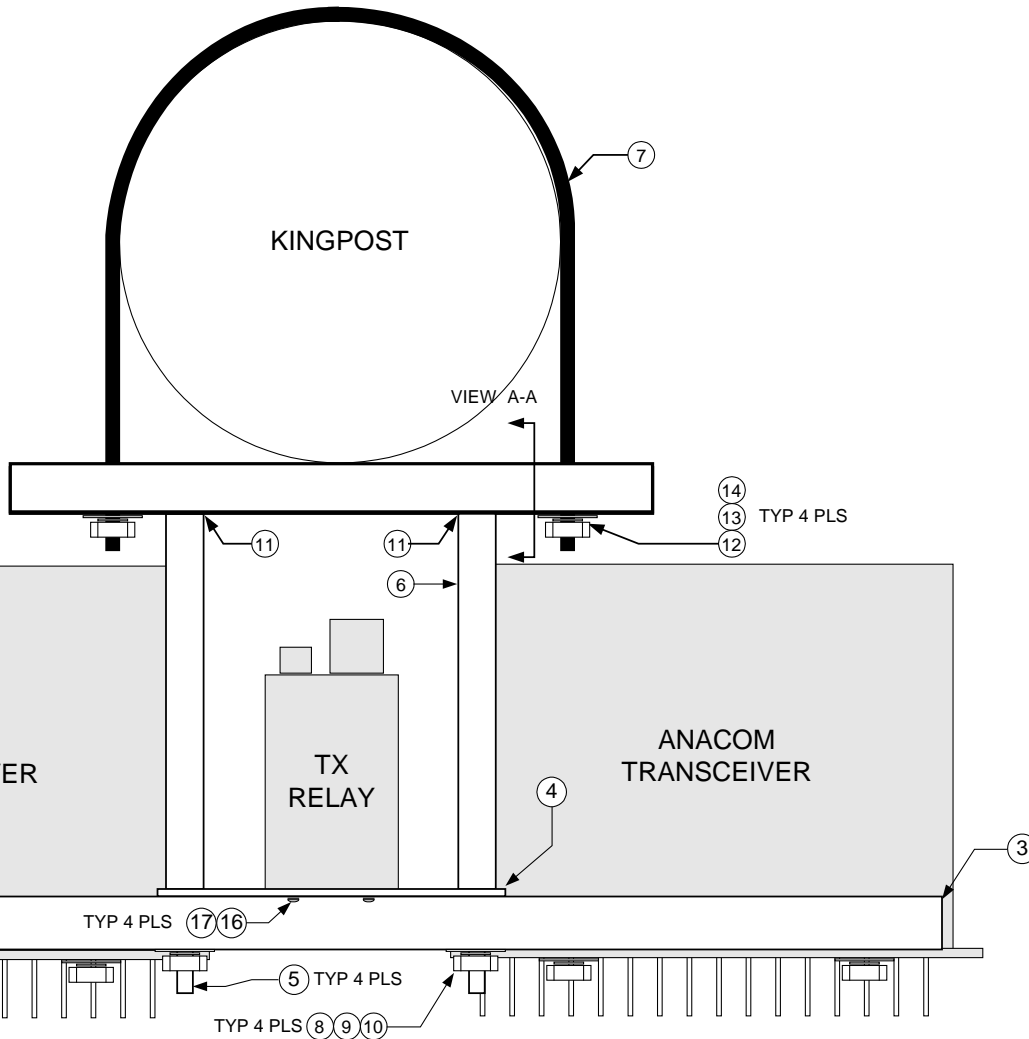


VIEW A-A  
NOT TO SCALE



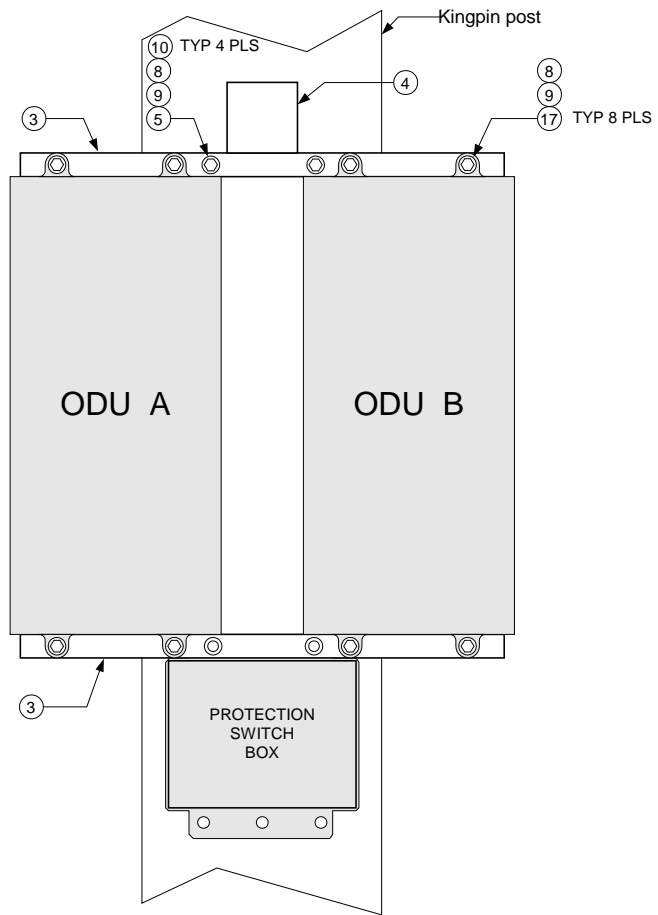
1+1 Kingpost Mounting Kit Parts List  
12124-xxx

ITEM	Description	QTY
1	Inner Channel, 31991	2
2	Outer Channel, 31992	2
3	Long Bar, 31620	2
4	Relay Plate, 31622	1
5	Threaded 3/8 rod, SS, 12 in	4
6	Tube, 8 in x 0.7in dia SS	4
7	U Bolt	2
8	Washer, flat, 3/8, SS	8
9	Washer, split, 3/8, SS	4
10	Nut, 3/8, SS	4
11	Guide	2
12	Washer, flat, 5/16, SS	4
13	Washer, split, 5/16, SS	4
14	Nut, 5/16-18, SS	4
15	Bolt, 3/8 x 1, SS	4
16	Washer, split, #10, SS	4
17	Bolt, 10-32 x 3/8, SS	8

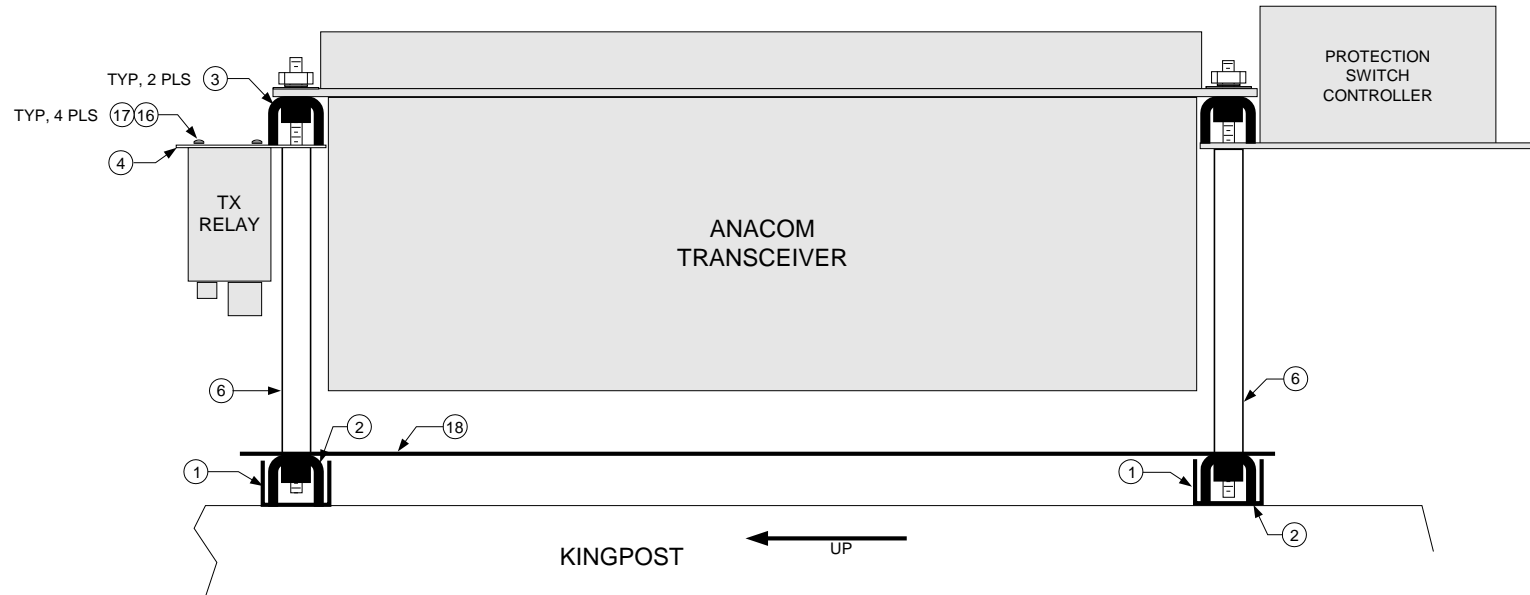
**ANACOM INC.**  
3000 Tasman Dr., Santa Clara, CA 95054

Title: **ASSEMBLY DRAWING, REDUNDANT MOUNTING KIT FOR KINGPOST**

Size <b>B</b>	Document Number <b>31623</b>	Rev <b>4</b>
Date: <b>17 FEB 2006</b>	Sheet <b>1</b> of <b>3</b>	



<b>ANACOM INC.</b> 3000 Tasman Dr., Santa Clara, CA 95054		
Title	ASSEMBLY DRAWING, REDUNDANT MOUNTING KIT FOR KINGPOST	
Size	Document Number	Rev
<b>B</b>	31623	4
Date:	17 FEB 2006	Sheet 2 of 3



NOTE: U Bold, item 7, not shown for clarity

<b>ANACOM INC.</b> 3000 Tasman Dr., Santa Clara, CA 95054		
Title <b>ASSEMBLY DRAWING, REDUNDANT MOUNTING KIT FOR KINGPOST</b>		
Size <b>B</b>	Document Number <b>31623</b>	Rev <b>4</b>
Date: <b>17 FEB 2006</b>	Sheet <b>3</b> of <b>3</b>	