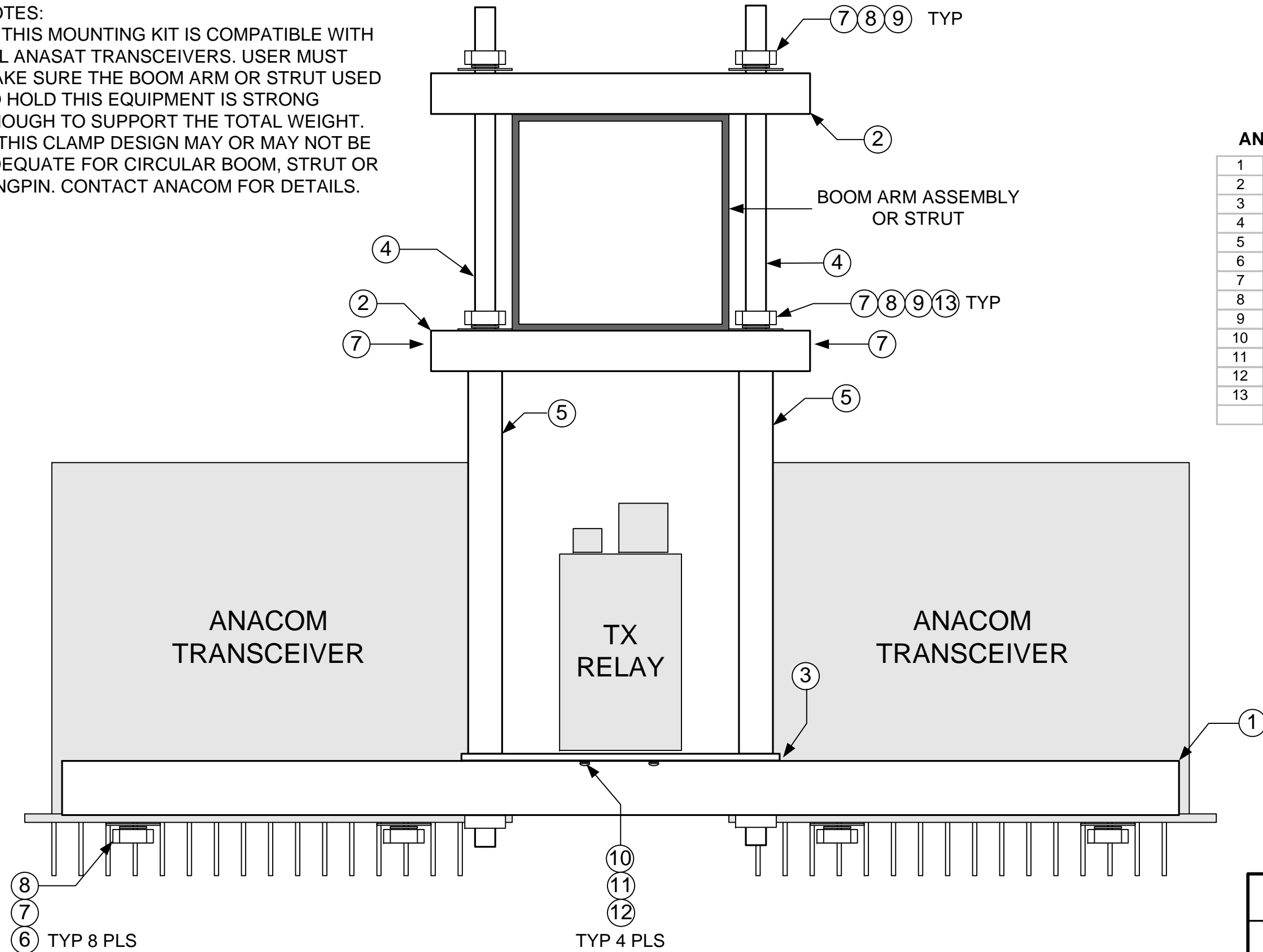


NOTES:

1. THIS MOUNTING KIT IS COMPATIBLE WITH ALL ANASAT TRANSCEIVERS. USER MUST MAKE SURE THE BOOM ARM OR STRUT USED TO HOLD THIS EQUIPMENT IS STRONG ENOUGH TO SUPPORT THE TOTAL WEIGHT.
2. THIS CLAMP DESIGN MAY OR MAY NOT BE ADEQUATE FOR CIRCULAR BOOM, STRUT OR KINGPIN. CONTACT ANACOM FOR DETAILS.



ANACOM PART NUMBER 12112

1	Long Bar, 31620	2
2	Short Bar, 31621	4
3	TX Relay Plate, 31622	1
4	Threaded 3/8 rod, SS, 18in long	4
5	Tube, 7in x 0.7in dia, SS	4
6	Bolt, 3/8 x 1in SS	8
7	Washer, flat, 3/8 SS	28
8	Washer, split, 3/8 SS	16
9	Nut, 3/8 SS	8
10	Screw, 10-32 x .5, SS	4
11	Washer, #10 flat, SS	4
12	Washer, #10 split, SS	4
13	Guide, 31973	2

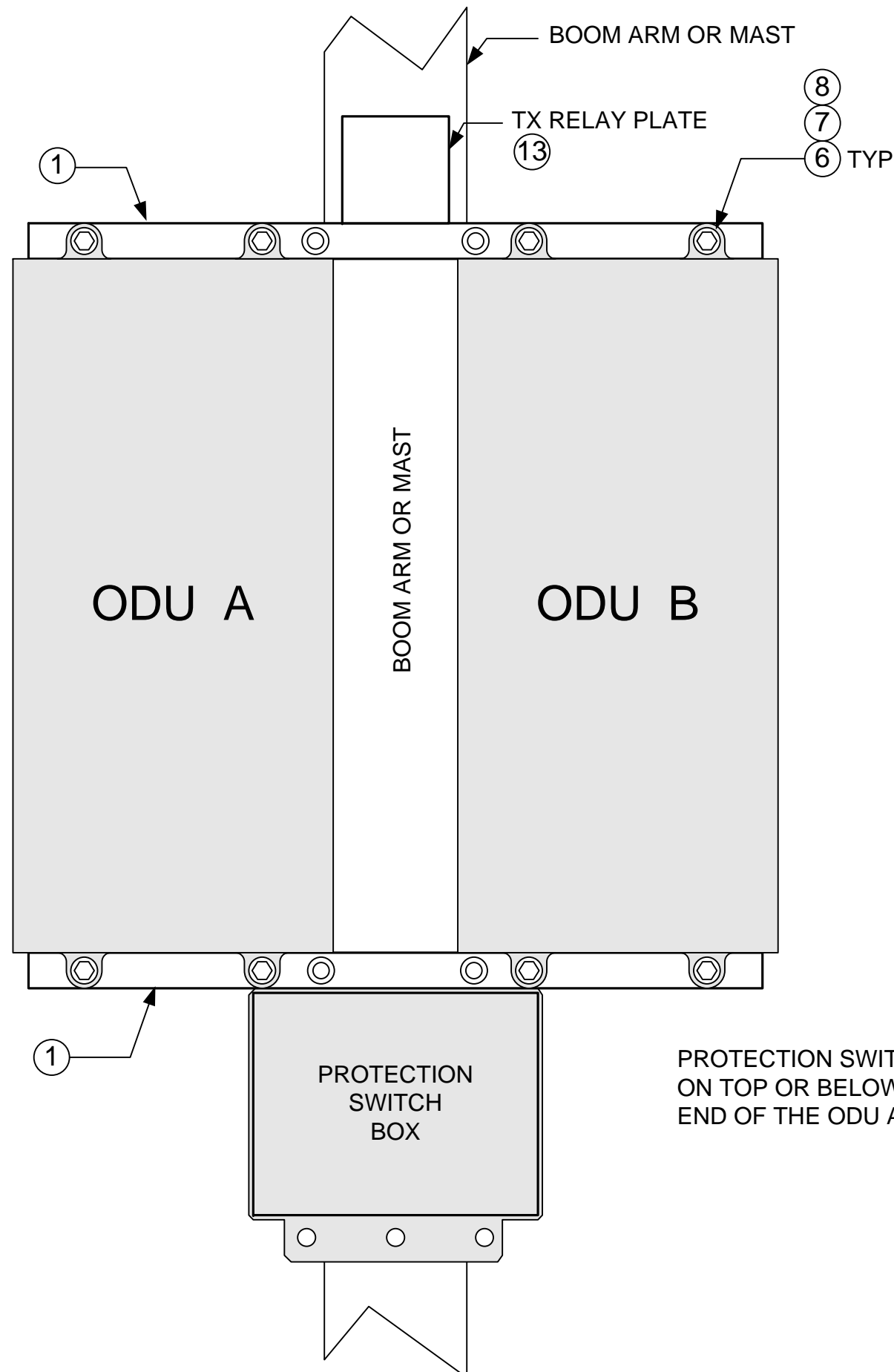
ANACOM INC.

3000 Tasman Drive, Santa Clara, CA 95054

Title **ASSEMBLY DRAWING, 1X1 MOUNTING KIT**

Size **B** Document Number **31625** Rev **4**

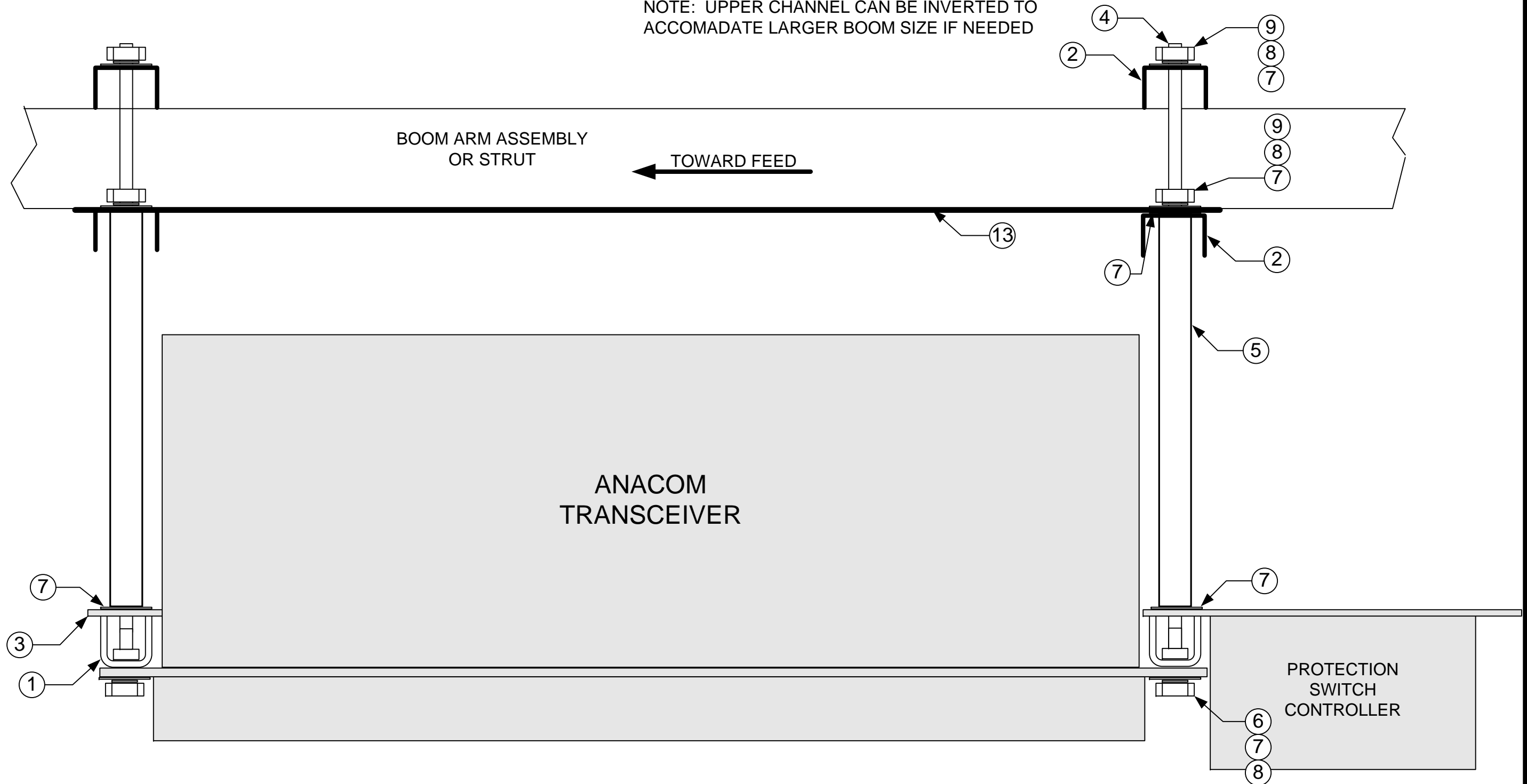
Date: 22 APR 2005 Sheet 1 of 3



PROTECTION SWITCH BOX MAY BE MOUNTED ON TOP OR BELOW LONG BAR, OR ON EITHER END OF THE ODU AS DESIRED.

ANACOM INC.		
3000 Tasman Drive, Santa Clara, CA 95043		
Title ASSEMBLY DRAWING, MOUNTING KIT		
Size B	Document Number 31625	Rev 4
Date: 22 APR 2005	Sheet 2 of 3	

NOTE: UPPER CHANNEL CAN BE INVERTED TO ACCOMADATE LARGER BOOM SIZE IF NEEDED



ANACOM INC. 3000 Tasman Drive, Santa Clara, CA 95054		
Title ASSEMBLY DRAWING, 1x1 MOUNTING KIT		
Size B	Document Number 31625	Rev 4
Date: 22 APR 2005	Sheet 3 of 3	