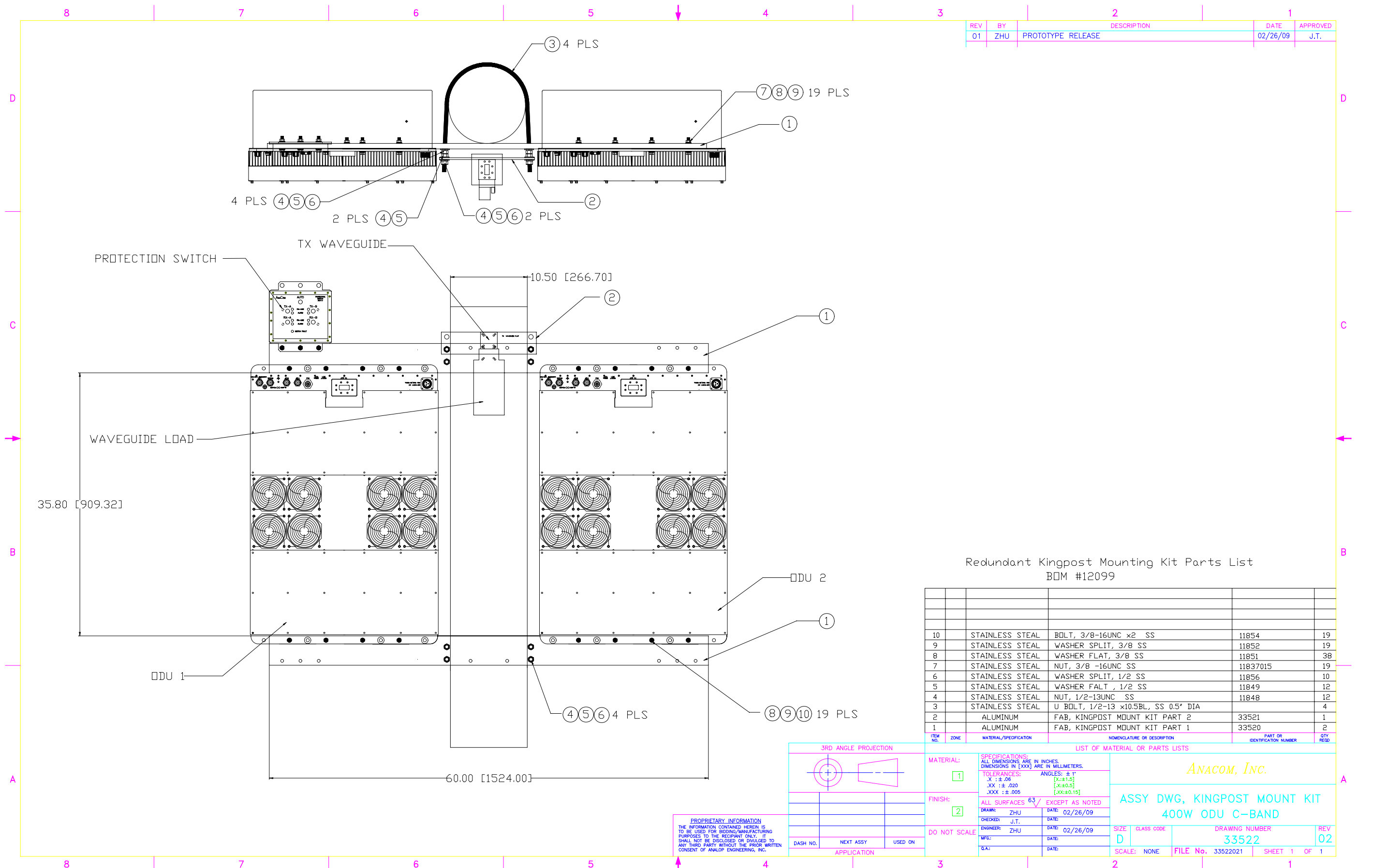
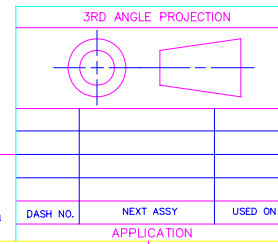


| REV | BY | DESCRIPTION | DATE | APPROVED |
|-----|-----|-------------------|----------|----------|
| 01 | ZHU | PROTOTYPE RELEASE | 02/26/09 | J.T. |



Redundant Kingpost Mounting Kit Parts List
BOM #12099

| ITEM NO. | ZONE | MATERIAL/SPECIFICATION | NOMENCLATURE OR DESCRIPTION | PART OR IDENTIFICATION NUMBER | QTY REQD |
|----------|------|------------------------|-------------------------------------|-------------------------------|----------|
| 10 | | STAINLESS STEEL | BOLT, 3/8-16UNC x2 SS | 11854 | 19 |
| 9 | | STAINLESS STEEL | WASHER SPLIT, 3/8 SS | 11852 | 19 |
| 8 | | STAINLESS STEEL | WASHER FLAT, 3/8 SS | 11851 | 38 |
| 7 | | STAINLESS STEEL | NUT, 3/8 -16UNC SS | 11837015 | 19 |
| 6 | | STAINLESS STEEL | WASHER SPLIT, 1/2 SS | 11856 | 10 |
| 5 | | STAINLESS STEEL | WASHER FALT, 1/2 SS | 11849 | 12 |
| 4 | | STAINLESS STEEL | NUT, 1/2-13UNC SS | 11848 | 12 |
| 3 | | STAINLESS STEEL | U BOLT, 1/2-13 x10.5BL, SS 0.5" DIA | | 4 |
| 2 | | ALUMINUM | FAB, KINGPOST MOUNT KIT PART 2 | 33521 | 1 |
| 1 | | ALUMINUM | FAB, KINGPOST MOUNT KIT PART 1 | 33520 | 2 |



| LIST OF MATERIAL OR PARTS LISTS | |
|---|---|
| MATERIAL: [1] | SPECIFICATIONS: ALL DIMENSIONS ARE IN INCHES. DIMENSIONS IN [XXX] ARE IN MILLIMETERS. |
| FINISH: [2] | TOLERANCES: .X : ± .06 [X:±.15] .XX : ± .020 [X:±0.5] .XXX : ± .005 [X:±0.15] |
| ALL SURFACES 63 EXCEPT AS NOTED | |
| DRAWN: ZHU | DATE: 02/26/09 |
| CHECKED: J.T. | DATE: |
| ENGINEER: ZHU | DATE: 02/26/09 |
| MFG: | DATE: |
| Q.A.: | DATE: |
| DO NOT SCALE | SIZE D CLASS CODE |
| DASH NO. | NEXT ASSY |
| USED ON | APPLICATION |
| <p style="text-align: center;">Anacom, Inc.</p> <p style="text-align: center;">ASSY DWG, KINGPOST MOUNT KIT 400W ODU C-BAND</p> | |
| SCALE: NONE | DRAWING NUMBER: 33522 |
| FILE No. 33522021 | REV 02 |
| SHEET 1 OF 1 | |

PROPRIETARY INFORMATION
THE INFORMATION CONTAINED HEREIN IS TO BE USED FOR BIDDING/MANUFACTURING PURPOSES TO THE RECIPIENT ONLY. IT SHALL NOT BE DISCLOSED OR DIVULGED TO ANY THIRD PARTY WITHOUT THE PRIOR WRITTEN CONSENT OF ANALOG ENGINEERING, INC.