

# Kromos<sup>®</sup>

## Internet Phone eXchange



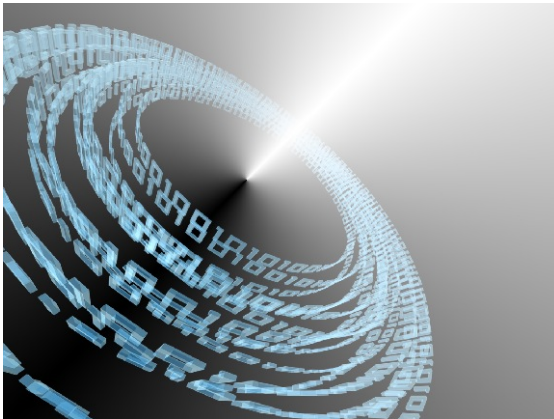
# Kromos-IPX

### *VoIP Call Routing*

**ANACOM's Kromos-IPX<sup>®</sup>** is designed to be the VoIP Telephone Exchange for large scale satellite networks spanning across countries or continents, although it can also manage the smaller networks for a neighborhood or an enterprise.

Hundreds to many thousands of calls can be concentrated to the IPX at some central locations and be terminated and routed within the network or to the outside PSTN via one or multiple concentrated standard telephone interfaces.

The Kromos platform supports almost all popular protocols e.g. H.323, SIP, MGCP and also facilitates PSTN connectivity through a Media Gateway. Calls between devices using any combination of H.323, SIP, MGCP, or the PSTN (T1, E1 etc) are supported, enabling businesses to save operational expenditure by tying enterprise and carrier networks at a fraction of the cost.



### *Features*

- Complete VoIP solution
- Route calls instantaneously, with little to almost no delay
- Custom Dialing features include selectable number of digits as well as formats
- Logs all calls for billing purposes
- CDR Data Output
- Support for various compression schemes: G.711, G.723, G.726, G.729 families
- PBX answering system with custom greetings and dialing menus, call routing, call setup and termination
- Improved security with a firewall designed to keep out unwanted incoming traffic and block unauthorized outgoing VoIP calls
- 2-U chassis targeted towards remote locations that require a cost-effective, high-performance unit

### *Detailed Specifications*

Dimensions: 18.9"x19"x3.5"  
(480mm x 483mm x 89mm)  
(for 19" rack mounting)

Power Consumption: 55W (typical)  
Universal Power Supply (110/220VAC)  
Available with optional 48VDC supply

Operating Conditions:  
+5 to +45° deg. C ambient  
95% humidity non-condensing

Storage Temperature:  
-25 to + 85 deg. C. ambient