

AnaCom's Supervisor 9 Monitor and Control software is the interface for your AnaCom outdoor products. You can monitor all of your AnaCom ODUs from a single window, and control one or all of them with a single button click. Supervisor 9 puts you in control of your AnaCom units, whether you're running a single ELSAT<sup>®</sup> BUC, or an entire network of ODUs with AnaCom's 1+1 or 1+2 Protection Switch redundancy systems.

## Features

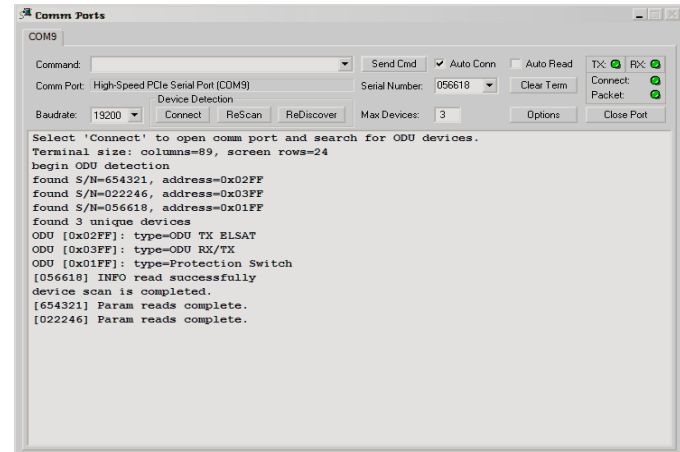
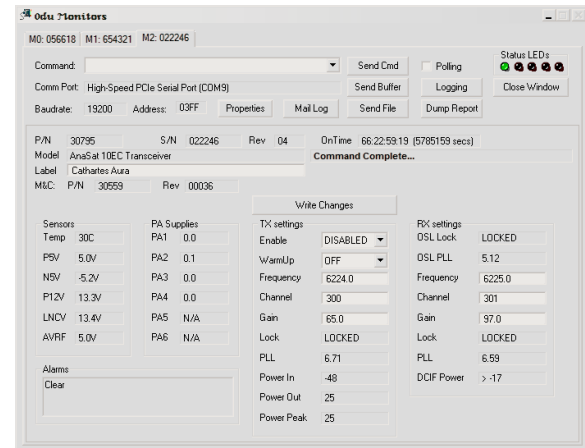
- ✓ Monitor your AnaCom ODUs with the Graphical User Interface, and control them via the GUI or a terminal console interface.
- ✓ Compatible with Vista and Windows NT-based systems
- ✓ Supports monitor and control of multiple ODUs
- ✓ Lightweight, robust program
- ✓ Unit polling with the ability to toggle polling on individual units
- ✓ Alarm logging with e-mailed status reports
- ✓ Remotely configure your ODUs via command buffer or file upload

## Expandable

- ✓ Supervisor 9 supports an unlimited number of attached AnaCom ODUs.
- ✓ Multiple units can connect to AnaComm via a single port.

## Requirements

- ✓ Windows Vista, XP, or another Windows NT-based system
- ✓ Serial port for ODU interface  
(Works with USB-to-serial adapters)
- ✓ Netbook compatible (10" screen recommended)



AnaCom Supervisor 9									
Add Comm Port		Save Config		Load Config		Lock Send		About Help	
Port Conn	Poll	Log	Device Type	S/N	Addr	Status	Alarms	Model Name	
0: COM3	🟢	🟡	ODU RX/TX	022246	03FF	0x0	Clear	---	
1: COM3	🟢	🟡	Protection Switch	056618	01FF	0x0	Major Alarm	AnaCom VSAT PROTECTION SWITCH	
2: COM3	🟢	🟡	ODU TX ELSAT	654321	02FF	0x0	Clear	---	
Ready									